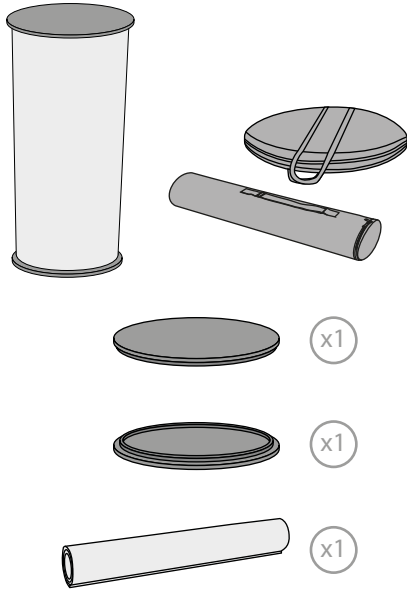


1. GRAPHIC ATTACHMENT



CONTENT



Open the bag, check the content of the bag and take out all the pieces carefully.

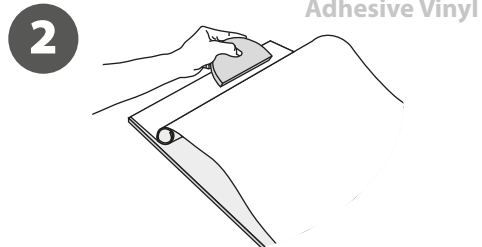
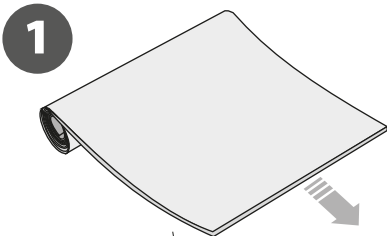
To set-up the Promotion counter, first you must attach its graphic (supplied separately) to the flexible panel following the **next steps** showed below.

Place the base on the ground and start the application of the flexible panel around the base so that they match both velcro strips.

Once the panel is set around the half of the base, place the countertop.

Lastly, finish setting the panel around both the base and the countertop.

GRAPHIC ATTACHMENT



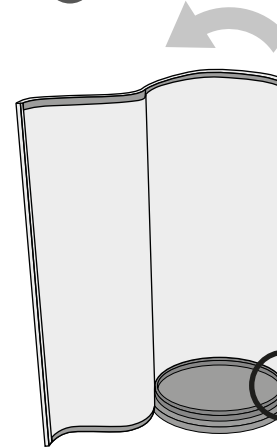
For those cases in which the graphic is **supplied by the client**, we recommend making use of the materials listed in the following **QR code** (scan for downloading Excel file). Please contact us or visit www.cashdisplay.com for more information.



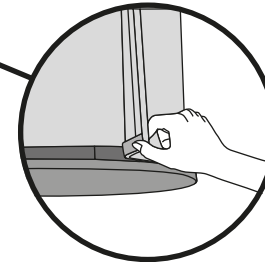
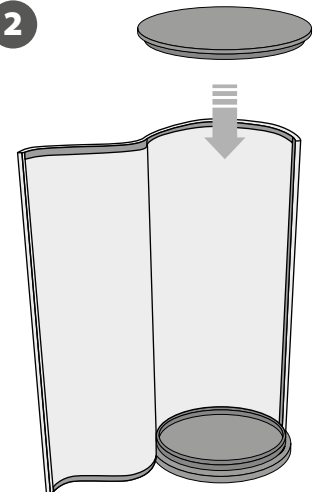
2. SET UP THE STRUCTURE



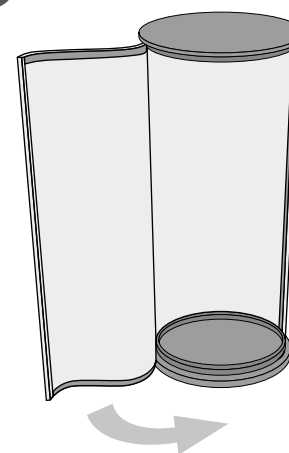
1



2



3



4

